



Safety Instructions



0,1,2,4,6,7,8,9,11,15,
20,22,26,27



Info Hotline **+49 (0) 5041 998 389**

Mon. - Do. 7⁰⁰ - 20⁰⁰

Fr. 7⁰⁰ - 17⁰⁰




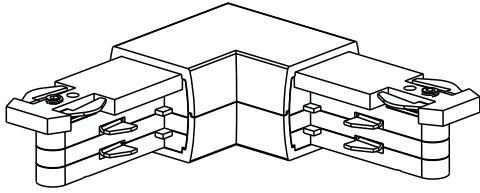
Paulmann Licht GmbH
Quezinger Feld 2
31832 Springe / Germany

Art.-Nr.:

951.42

(+MA 173)

PH 04/13 

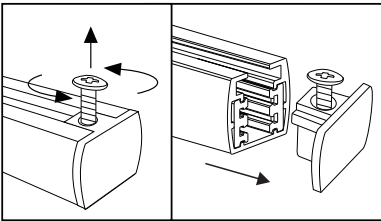
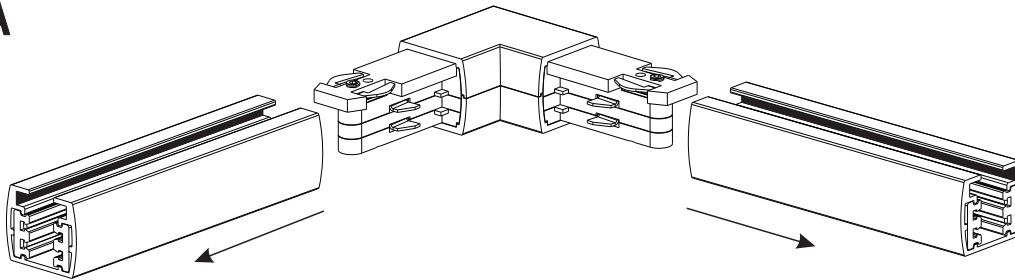


1x



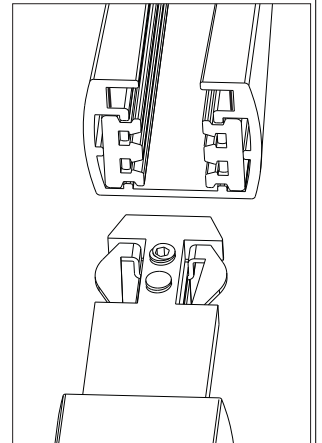
1x

A

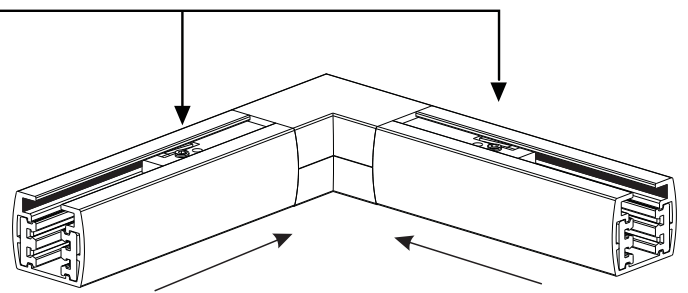
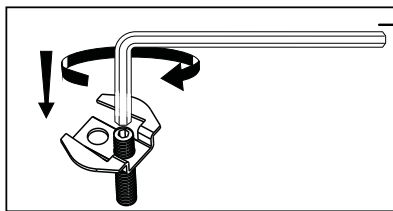


Safety Instructions

Nr. 0, 1, 2, 4



B



Safety Instructions

Nr. 0, 1, 2, 4

